

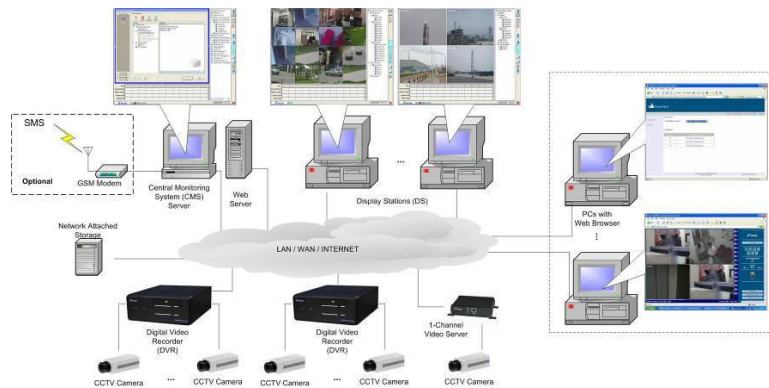
## **Introduction**

iFocus Pte Ltd is an ISO9000 certified solutions company with good electronics engineering know-how, particularly in the area of embedded digital and communication solutions.

Our CCTV product line includes:

- Central Management System (CMS)
- E+ Model DVR with 19" rack-mounted casing for industrial applications
- E+ Model DVR for commercial applications
- A+ and B+ Model DVR for residential applications

## Central Management System (CMS)

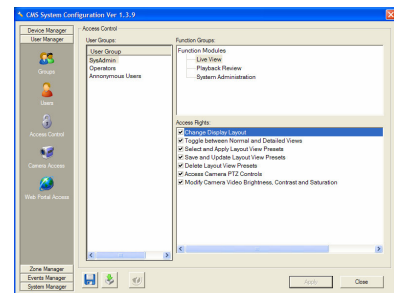


DVR with CMS is designed for corporate and chain store applications. With video data streamed to a centralized server, system administrators are able to monitor and playback individual cameras from different locations in a single platform. Comprehensive user access control and system health monitoring make CMS more than merely a CCTV system, but a management tool as well.

CMS software consists of three modules: Security Stream Server (SSS), Local Display Station (LDS) and the Web Portal (WP).

### Security Stream Server (SSS)

- Device management: registration of devices including DVR, video server, user's remote PC or display station, and network attached storage
- User management: grouping and access right assigning of users
- Surveillance zone management: grouping of individual video channels according to their physical locations
- Event management: specification of event handling
- System management: scheduling of system health monitoring and setting of audit trail



### Local Display Station (LDS)

- Individual video streaming from different DVR and video servers
- Tree-directory display of individual video channels according to their surveillance zone
- Centralized playback and video backup
- Graphical time-line display of events including motion detection, video loss and external trigger
- Dual-monitor display support





## Industrial

DVR catering to industrial usages is housed in a 19" rack-mountable casing. Thanks to its carefully designed software and hardware structure, the live view is still available even when there is no hard disk detected. This enables the feature of hard disk mirroring and hot-swapping.



## Specification

- 400FPS (PAL)/ 480FPS (NTSC) live view refreshing rate
- 200FPS (PAL)/ 240FPS (NTSC) recording rate
- Secured MPEG4 compression format
- Software based video motion detection
- Time-lapse and event-log playback
- Pure web-based remote access, configuration and operation
  
- 4/8/16-channel support
- Highest hard disk capacity: 1.5TB/ 750GB Mirroring
- Three video outputs: composite, VGA and Spot
- Optional built-in DVD-RW backup
- 2-channel audio recording, playback and remote real-time
- Pan-tilt-zoom (PTZ) camera support
- Remote access through LAN, WAN, Internet, GSM and PSTN
- Central management system enabled

## Commercial

DVR designed for commercial usage ensures a long recording period before rewriting the hard disk. MPEG4 compression format makes that possible. Not only the recording period is longer, the refreshing rate at remote PC is also faster due to the much smaller file size compared to other compression formats.



## Specification

- 400FPS (PAL)/ 480FPS (NTSC) live view refreshing rate
- 200FPS (PAL)/ 240FPS (NTSC) recording rate
- Secured MPEG4 compression format
- Software based video motion detection
- Time-lapse and event-log playback
- Pure web-based remote access, configuration and operation
  
- 4/8/16-channel support
- Highest hard disk capacity: 1.5TB
- Three video outputs: composite, VGA and Spot
- Optional built-in DVD-RW backup
- 2-channel audio recording, playback and remote real-time
- Pan-tilt-zoom (PTZ) camera support
- Remote access through LAN, WAN, Internet, GSM and PSTN
- Central management system enabled

## Residential

DVR for residential users fulfils the basic requirement of CCTV applications. Nevertheless, the software is sophisticated enough to detect motion or lighting change in individual camera and send out alerts.



## Specification

- 4FPS/ Ch live view refreshing rate and recording frame rate
- Secured MPEG4 compression format
- Software based video motion detection
- Time-lapse and event-log playback
- Pure web-based remote access, configuration and operation
  
- 8/16-channel support
- Highest hard disk capacity: 1.5TB
- Two video outputs: composite and VGA
- Optional built-in DVD-RW backup
- 2-channel audio recording, playback and remote real-time
- Pan-tilt-zoom (PTZ) camera support
- Remote access through LAN, WAN, Internet and PSTN